



CRISTEMA®

HANDS OF SOUL

CRISTEMA®

HANDS OF SOUL

*An inspiring project.*

*From passion to work, this is how **Cristema** was born.*

---

*Um projeto inspirador.*

*Da paixão à obra, assim nasceu a **Cristema**.*



*Cristema Company  
Guimarães,  
Portugal*



*On January 26, 1993 Cristema was born, by the vision of its founder João da Silva Fertuzinhos.*

*With just one collaborator, a story is born through the hands of artisans with the wisdom and experience in the production of the cutlery industry.*

*The founder's perseverance and his family history linked to the industry, allowed this project to evolve, taking on greater expression, years later, with the creation of a factory unit for the production of cutlery.*

*Over the years, the desire for improvement and innovation has led Cristema to national and international markets, currently counting on about 60 employees. João da Silva Fertuzinhos desire is revealed in each collection, thought care and with the best materials, betting on the design and innovation of production techniques, now with the generational continuity of the sons Emanuel and Cristiano Fertuzinhos.*

*Born in Guimarães and inspired by the world, we work so that each collection translates a little of our history. It is the passion for cutlery that moves us, creating connections, emotions and desire on each table we decorate.*

---

*A 26 de janeiro de 1993 nasce a Cristema, fruto da visão do seu fundador João da Silva Fertuzinhos.*

*Com apenas um colaborador, nasce uma história pelas mãos de artesãos com a sabedoria e a experiência na produção da indústria cuteleira. A perseverança do fundador e o seu percurso familiar ligado à indústria, permitiu que este projeto fosse evoluindo, tomando maior expressão, anos mais tarde, com a criação de uma unidade fabril destinada à produção de talheres.*

*Ao longo dos tempos, a vontade de aperfeiçoamento e inovação conduziu a Cristema aos mercados nacionais e internacionais, contando, atualmente, com cerca de 60 colaboradores.*

*O desejo de João da Silva Fertuzinhos revela-se em cada coleção, pensada de forma criteriosa e com os melhores materiais, apostando no design e na inovação das técnicas de produção, agora pela continuidade geracional dos filhos Emanuel e Cristiano Fertuzinhos.*

*Nascidos em Guimarães e inspirados pelo mundo, trabalhamos para que em cada coleção se traduza um pouco da nossa história. É a paixão pela cutelaria que nos move, criando ligações, emoções e desejo em cada mesa que decoramos.*

*António Fertuzinhos  
(1879-1971)*



*Serafim Fertuzinhos  
(1921-1991)*



*João Fertuzinhos  
(Cristema's founder)*



## **1879 - The beginning of the passion for the cutlery industry.**

*António Fertuzinhos, demonstrated, early on, his passion for the world of cutlery, starting activity in this branch with the manufacture of scissors. In 1908, a factory was born, in the place of Arquinho in the parish of S. Clemente, where his four children worked: Aureliano, Isaías, David and Serafim Fertuzinhos, who, years later, created their own companies connected to the cutlery business.*

---

*António Fertuzinhos demonstrou, desde cedo, a sua paixão pelo mundo das cutelarias, iniciando atividade neste ramo com o fabrico de tesouras. Em 1908, nasce uma fábrica, no lugar do Arquinho na freguesia de S. Clemente, onde trabalharam os seus quatro filhos: Aureliano, Isaías, David e Serafim Fertuzinhos, que, anos mais tarde, criaram as suas próprias empresas ligadas ao ramo das cutelarias.*

## **1921 - A passion that travels generations.**

*Serafim Fertuzinhos, the youngest son of António Fertuzinhos, has been working with his father and brothers since he was young. In 1958, in the place of Pinheiro in the parish of Sande S. Clemente, he built a factory for the production of pocket knives, bush knives and daggers. Years later, he dedicated himself to the manufacture of pruning shears. Led by tradition linked to the cutlery industry, their children worked there and, later, they started their own companies in this area as well.*

---

*Serafim Fertuzinhos trabalha, desde novo, com o seu pai e os seus irmãos. Em 1958, constrói no lugar do Pinheiro da freguesia de Sande S. Clemente, uma fábrica para a produção de canivetes, facas de mato e punhais. Anos mais tarde, dedica-se ao fabrico de tesouras de poda. Conduzidos pela tradição ligada à indústria das cutelarias, os seus filhos aí trabalharam e, mais tarde, criaram as suas próprias empresas também nesta área.*

## **1993 - The dawn of history.**

*Cristema started its activity in 1993, inspired by the vision of João da Silva Fertuzinhos, son of Serafim Fertuzinhos and grandson of António Fertuzinhos, who, since very early was linked to the cutlery industry. Initially, it develops a small industrial project with the production of housewares and gardening. The founder's perseverance and his family history linked to the industry, allowed this project to evolve, taking on greater expression, years later, with the creation of a factory unit for the production of cutlery.*

---

*A Cristema inicia a sua atividade em 1993, inspirada pela visão de João da Silva Fertuzinhos, filho de Serafim Fertuzinhos e neto de António Fertuzinhos, que, desde muito cedo esteve ligado à indústria das cutelarias. Inicialmente, desenvolve um pequeno projeto industrial com a produção de utilidades domésticas e de jardinagem. A perseverança do fundador e o seu percurso familiar ligado à indústria, permitiu que este projeto fosse evoluindo, tomando maior expressão, anos mais tarde, com a criação de uma unidade fabril destinada à produção de talheres.*





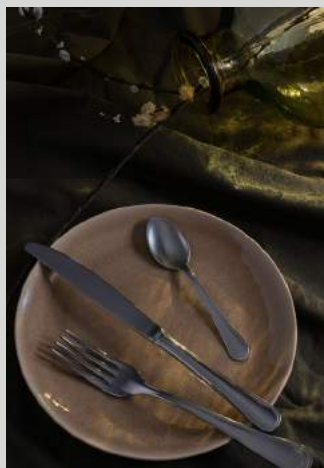












**OSAKA** | Pág. 12-13

**MACAU** | Pág. 14-15

**TÓQUIO** | Pág. 16-17

**TEXAS** | Pág. 18-19

**MANAUS** | Pág. 20-21

**DAKAR** | Pág. 22-23

**ANTIQUE** | Pág. 24-25

**MILÃO** | Pág. 26-27

**VIGO** | Pág. 28-29

**BAGUETE** | Pág. 30-31

**COLOMBO** | Pág. 32-33

**BILBAO** | Pág. 34-35

**AGRA** | Pág. 36-37

**CAIRO** | Pág. 38-39

**VENEZA** | Pág. 40-41

**AGADIR** | Pág. 42-43

**ISTAMBUL** | Pág. 44-45

**CHICAGO** | Pág. 46-47

**BURGOS** | Pág. 48-49

**SPLIT** | Pág. 50-51

**ATENAS** | Pág. 52-53

**NEW YORK** | Pág. 54-55

**VOLGA** | Pág. 56-57

**DESNA** | Pág. 58-59

**SANTORINI** | Pág. 60-61

**PATMOS** | Pág. 62-63

**PRETÓRIA** | Pág. 64-65

**KIDS** | Pág. 66-67

**KIDS PRINT** | Pág. 68-69

**KIDS PAINT** | Pág. 70-71

# OSAKA

---

| Finishing Polished

| Material 18/10 AISI 304

| Thickness 4.0mm



---

*Vibrant and modern, Osaka is known for its culinary and its navigable canals that run through the corners of the city. Inspired by this environment, this set is born. Symmetrical and delicate, it's the perfect choice for lovers of minimalism.*





# MACAU

---

| Finishing Polished

| Material 18/10 AISI 304

| Thickness 4.0mm



---

*Enigmatic and minimalist, Macau breathes simplicity and tranquility. Inspired by its lifestyle free of expendable accessories, this model represents the true meaning that less is more.*





# TÓQUIO

---

| Finishing Polished

| Material 18/10 AISI 304

| Thickness 4.0mm



---

*Enigmatic and minimalist, Tokyo breathes simplicity and tranquility. Inspired by its lifestyle free of expendable accessories, this model represents the true meaning that less is more.*





# TEXAS

---

| **Finishing** Polished

| **Material** 18/10 AISI 304

| **Thickness** 4.0mm



---

*Texas isn't just a place on a map. It's an idea in the heart of the people ... and on each one's table. Perfect for steak lovers, it was designed to ensure a clear and long-lasting connection between the two elements: fork and knife.*





# MANAUS

---

| **Finishing** Polished

| **Material** 18/10 AISI 304

| **Thickness** 4.0mm



---

*Iconic capital of Amazonas, Manaus is immersed in its dense forests and irregular contours, which served as inspiration of this model designed to satisfy steak lovers. Its timeless and classic design provides an intense and mysterious atmosphere to your table.*





# DAKAR

---

| Finishing Polished

| Material 18/10 AISI 304

| Thickness 3.0mm



---

*Dakar is all about waves. The sea and the desert come together in this textured and remarkable look. Through its geometric pattern, this set presents unique details that make a difference in any environment.*





# ANTIQUE

---

| Finishing Polished

| Material 18/10 AISI 304

| Thickness 3.0mm



---

*The Antique model stands out for its ornamental and exuberant pattern that gives your table an eternal refinement. Antique is ideal for dressing your table in the most special moments.*





# MILÃO

---

| Finishing Polished

| Material 18/10 AISI 304

| Thickness 3.0mm



---

*Milan take us to an atmosphere of elegance and sophistication, where the Classic and the Contemporary embrace each other. The simple and timeless lines of this model reflects every corner of this European reference.*





# VIGO

---

| Finishing Polished

| Material 18/10 AISI 304

| Thickness 3.0mm



---

*Vigo is landscape, architecture and history. All of this combined in a perfect and harmonious way, in a simplicity and free of exaggeration. This model reflects and breathes the city itself in a design capable of making a difference by its own sobriety.*





# BAGUETE

---

| Finishing Polished

| Material 18/10 AISI 304

| Thickness 3.0mm



---

*The main detail of Baguete offers personality and refinement. Its timelessness provides the possibility of decorating a table both in formal events and festive seasons and also in a daily meals.*





# COLOMBO

---

| Finishing Polished

| Material 18/10 AISI 304

| Thickness 3.0mm



---

*Colombo is characterized by its gently curved and symmetrical lines. It is the reflection of the balance and harmony. Colombo is a classic model that suits any environment.*



# BILBAO

---

| Finishing Polished

| Material 18/10 AISI 304

| Thickness 3.0mm



---

*Surrounded by green mountains and full of life and excitement, Bilbao combines nature and dynamism. It's very easy to fall in love with the city and the model that gives it its name, characterized by its curved and uneven cable and flowing lines.*





# AGRA

---

| Finishing Polished

| Material 18/10 AISI 304

| Thickness 3.0mm



---

*The shelter of the emblematic Taj Mahal, Agra is characterized by its worked and sculpted design, which served as the basis for this model, loaded with luxury and sophistication.*





# CAIRO

---

| Finishing Polished

| Material 18/10 AISI 304

| Thickness 3.0mm



---

*On the margins of the River Nile, the imposing city of Cairo appears, this city is known for its frantic pace and Egyptian symbolism, captured in our personalized model with a linear and extremely characteristic shape.*





# VENEZA

---

| Finishing Polished

| Material 18/10 AISI 304

| Thickness 3.0mm



---

*Romantic and fluid, Venice essence is in every water channel in a harmonious combination of classic and contemporary. And this authentic model happened from this inspiring city.*



# AGADIR

---

| Finishing Polished

| Material 18/10 AISI 304

| Thickness 3.0mm



---

*Bathed by the Atlantic Ocean, Agadir is the city of sun, sea and nightlife. Our model was therefore inspired by its iconic moon-shaped beach, capable of giving to this cutlery a perfect combination of design and ergonomics.*





# ISTAMBUL

---

| Finishing Polished

| Material 18/10 AISI 304

| Thickness 2.5mm



---

*Istanbul is the place where the east waves crash against the rocks of the west. The bridge that connects Europe to Asia is represented by the elegant lines of this model, combining sophistication with functionality.*







# CHICAGO

---

| Finishing Polished

| Material 18/10 AISI 304

| Thickness 2.5mm



---

*Chicago presents itself as the pulse of America. With this symbolism in mind, we've created this model able to pull up your heartbeat. Give another life to your table with this sophisticated and elegant set.*



# BURGOS

---

| Finishing Polished

| Material 18/10 AISI 304

| Thickness 2.5mm



---

*Renowned for its Basque mountain ranges and hills, Burgos has an irregular and robust outline. This model represents the physiognomy of this Spanish province, characterized by the horizontal and vertical lines in all its parts.*





# SPLIT

---

| Finishing Polished

| Material 18/10 AISI 304

| Thickness 2.5mm



---

*Split is known by its colors and harmony and it is the place where the sea embraces the land, with an irresistible and amazing shape. Inspired by this symbolism, this model is born in a perfect combination between ergonomics and design in its purest state.*







# ATENAS

---

| Finishing Polished

| Material 18/10 AISI 304

| Thickness 2.5mm



---

*Athens, the eye of Greece and the mother of the arts and eloquence reveals its essence in every detail. Inspired by this mythology, we created this model capable of making a difference at any table.*



# NEW YORK

---

| Finishing Polished

| Material 18/10 AISI 304

| Thickness 2.5mm



---

*The city that never sleeps and where living and dreaming gets confused every day. This is how it feels and explains New York, represented in this unmistakable model.*





# VOLGA

---

| Finishing Polished

| Material 18/10 AISI 304

| Thickness 2.5mm



---

*The Volga River is the longest in Europe and is born in Russia and running into the Caspian Sea. Discreet and minimalist, this model of curved lines thus representing the course of the river in a subtle and elegant way.*







# DESNA

---

| Finishing Polished

| Material 18/10 AISI 304

| Thickness 2.5mm



---

*When simplicity and elegance come together, Desna is born. A model capable of enhancing your table in the best way possible.*



# SANTORINI

---

| Finishing Polished

| Material 18/10 AISI 304

| Thickness 2.5mm



---

*Surrounded by the ocean breeze and the salty flavor, Santorini is a true Greek goddess, with detailed architecture and in a perfect harmony with her rocky shape. These were the elements that led to the creation of this elegant and decorative model, perfect for classic lovers.*





# PATMOS

---

| Finishing Polished

| Material 18/10 AISI 304

| Thickness 2.5mm



---

*Surrounded by the Aegean Sea, Patmos is the island where the book of Revelation was written. Therefore, we wrote and designed this model with ergonomic lines and pure details, full of elegance and refinement.*







# PRETÓRIA

---

| Finishing Polished

| Material 18/10 AISI 304

| Thickness 2.5mm



---

*Governmental and powerful, Pretoria is where everything happens and executive power prevails. In a classic, detailed and elegant style, we brought to life this model full of personality.*



# KIDS

---

| **Finishing** Polished

| **Material** 18/10 AISI 304

| **Thickness** 2.0mm



---

*Kids is a model specially designed to meet the youngest needs. Its ergonomic design allows an easy adaptation to the children hand and their motor skills.*





# KIDS PRINT

---

| Finishing Polished

| Material 18/10 AISI 304

| Thickness 2.0mm



---

*This collection features fun drawings about different animals: giraffe, elephant, monkey, butterfly, octopus and crab. The model was designed to adapt to the motor skills of children, avoiding any extra effort during meals and ensuring safe handling. Its use is not recommended in children under 3 years age.*







# KIDS PAINT

---

| Finishing Polished

| Material 18/10 AISI 304

| Thickness 2.0mm



---

*This collection features fun drawings about different animals: giraffe, elephant, monkey, butterfly, octopus and crab. The model was designed to adapt to the motor skills of children, avoiding any extra effort during meals and ensuring safe handling. Its use is not recommended in children under 3 years age.*



# FINISHING

---



*Polished*



*Brushed*



*Vintage*

*| About colors | Cores:*



*Champagne*

*Gold*

*Copper*

*Bronze*

*Silver*

*Blue*

*Antracite*

*Black*

*Half Color*

*Bicolor*





**Wood Set**

24 Pieces | Peças



**Box**

24 Pieces | Peças

48 Pieces | Peças



**Wood Set**

48 Pieces | Peças



**Box**

75 Pieces | Peças

113 Pieces | Peças

130 Pieces | Peças



**Wood Set**

75 Pieces | Peças



**Wood Set**

113 Pieces | Peças



### Wood Set

130 Pieces | Peças



### Cube Box

130 Pieces | Peças



### Wood Steak Set

6 Pieces | Peças



### Wood Steak Set

12 Pieces | Peças



### Textile Set

12 Pieces | Peças



### Kids Set

4 Pieces | Peças





*We renew the cutlery tradition, giving a new perspective to details and its aesthetic dimension.*

*We want to show you what is best in Portugal.*

---

*Renovamos a tradição da cutelaria, atribuindo uma nova perspetiva aos detalhes e à sua dimensão estética.*

*Queremos mostrar o que em Portugal se faz de melhor.*

*Visit our website | Visita o nosso website:*





CRISTEMA®

HANDS OF SOUL

Rua dos Lameiros nº577/605  
4805-619 Vila Nova de Sande  
Guimarães, Portugal

+351 253 576 487  
+351 253 579 530

[www.cristema.com](http://www.cristema.com)  
[cristema@cristema.com](mailto:cristema@cristema.com)